



2016 YEAR IN REVIEW

Our motto is “we’re here to help”. In 2016, we helped over 160 older adults remain independent and active in their homes and provided counseling and support to 45 caregivers.

306 W. Superior St. Suite 10 Duluth, MN 55802 218-623-7800
www.agewellarrowhead.org

Board of Directors

Ric Schaefer Chair
Mary Alice Carlson-Secretary
Kirsten Cruikshank
Beth Hohenstein
Terese Tomanek
Kevin Pillsbury

STAFF

Mary Bovee-Executive Director
Kim Hileman-Volunteer Coordinator
Emma Shepard-Aging Services
Specialist
Cyndy Klinsiek-Aging Services
Specialist

Mission

Connecting older adults and caregivers to services that support healthy aging and independence

Vision

Aging well while living at home.

Staying well while caring for others.

NOTE FROM EXECUTIVE DIRECTOR

Dear Friends,

2016 was a very busy year for us. We experienced substantial growth by working closely with our partners at Essentia Health, St. Luke's, the Alzheimer's Association, the Senior Linkage Line, and Miner's Inc. to meet the growing needs of older adults and caregivers in our area. We listened to our clients and responded to their needs for services by developing plans for creating new programs including grocery shopping and delivery, transportation to medical appointments, and errand transportation. We participated in helping make our community become more dementia friendly by serving on committees for Dementia Friendly Duluth and provided dementia trainings to local businesses. We developed care plans that help older adults and their families avoid crisis and plan for what's ahead. We supported caregivers by providing counseling and supportive services. We increased our staff, including volunteers that we recognize as our best asset. We implemented a new system for accurately tracking volunteer and client information. Compassion and integrity drive who we are and what we do. In 2016, we helped over 160 older adults remain independent and active in their homes and provided counseling and support to 45 caregivers.

As we look ahead to 2017 we are excited to introduce a new technology in conjunction with our recently constructed website that allows clients to order and pay for their groceries on line as well as schedule rides and other appointments. The application is a web enhancement that will increase our ability to better serve our clients as well as communicate with our partners. Participating in Amazon Smile and Vehicle Donation to Any Charity (V-DAC), has allowed us more opportunities to capture donations. We are especially excited to participate in the Service Enterprise certification program offered by the Minnesota Association of Volunteer Administrators and Hands on Twin Cities. The process will prepare us to engage volunteers to meet our mission and experience new, purposeful energy around our volunteer program. We were also selected to participate in the University of Minnesota Duluth Center for Economic Development Student to Business Initiative through the Labovitz School of Business and Economics and the School of Fine Art. This initiative partners student teams with business owners who have identified an issue within their organization that they would like a fresh perspective on including marketing, consumer behavior, organizational management, or accounting. We challenged the students to help us market our programs, and increase our volunteers and donations. All of us at Age Well are excited to grow our organization and continue to think of new ways to best serve those we care about the most, our customers.

Marianne Bovee
Executive Director

Program Services



In 2016 Age Well provided care consultation, caregiver counseling, working caregiver support and volunteer services to residents of Duluth, Hermantown, and Proctor.

About Age Well Arrowhead

Age Well Arrowhead is a non-profit organization created in 2014 to connect older adults and caregivers to services that support healthy aging and independence. As the largest urban population center, a significant percentage of the region's older adult population resides in Duluth (14,449 adults age 60+) with additional older adults residing in the surrounding communities of Hermantown and Proctor (2,510 adults age 60+). While Duluth has a strong network of health care providers, until recently there has not been a "hub" or primary agency offering easy access to volunteer-based services, caregiver support, care coordination or other services supporting successful aging. These services have consistently been identified as priority needs by providers, caregivers and older adults within the Duluth area. To address these needs, the Arrowhead Area Agency on Aging sought LWAH funding in 2013 to support the creation of Age Well Arrowhead as an agency serving Duluth, Proctor and Hermantown. Funds were requested to support the development of chore, homemaker and care consulting services. Following organizational development, the LWAH contract was re-assigned to Age Well Arrowhead Inc. (10/1/14 – 6/30/16) to support the delivery of care coordination and volunteer-based chore and homemaker services. Since inception, Age Well has provided chore, homemaker and care consulting services to over 200 clients. This new non-profit is governed by a six-member board of directors.

COMMUNITY REACH

Growing Nonprofit

Staff Count-4

Number of volunteers-18

Clients served- over 200

Grants secured-5

Board Members-6

New Website-2,000 views

Facebook Page- 500 likes

We served 160 older adults and 98% reported our services helped them remain in their home.

We served over 45 caregivers and 95% reported our services allowed them to continue to provide care.

Income Statement

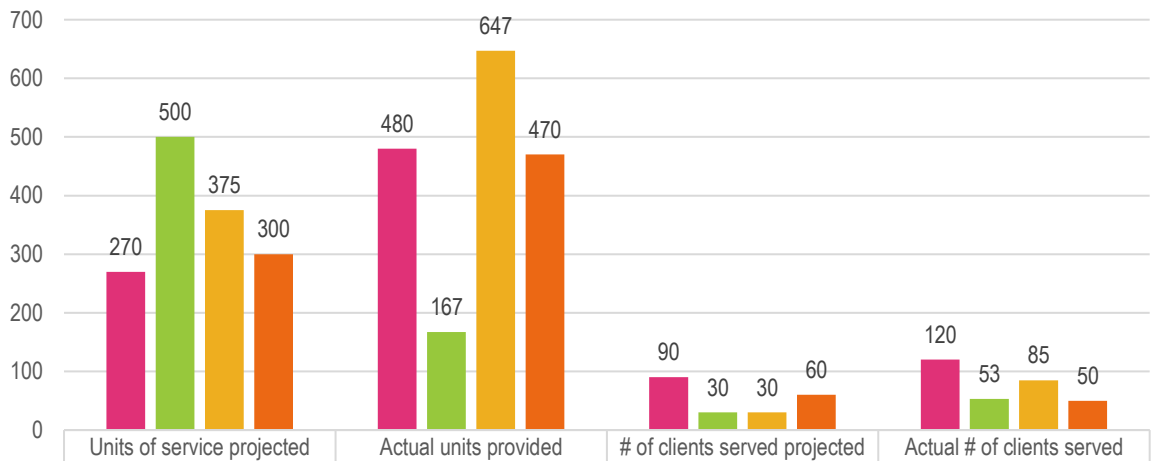
TOTAL REVENUE	\$236,069
Cost Share	\$4,155
Donations	\$14,588
Federal Grants	\$35,000
State Grants	\$182,326
TOTAL PROGRAM EXPENSES	184,034 \$
Management and General Costs	\$32,176
Fundraising Costs	\$3,459
TOTAL EXPENSES	\$219,669
Net Income	\$16,400

Balance Sheet

ASSETS	
Current Assets	\$89,662
Fixed Assets	\$8,754
TOTAL ASSETS	\$98,416
LIABILITIES	
Current Liabilities	\$6,422
NET ASSETS	
Unrestricted	\$91,994
Net Income	\$16,400
TOTAL NET ASSETS	\$74,788.00
TOTAL LIABILITIES & NET ASSETS	\$98,416

USE OF FUNDS

Comparing Actual Accomplishments to Goals



Care Consultation	270	480	90	120
Chore Services	500	167	30	53
Homemaker Services	375	647	30	85
Caregiver Counseling	300	470	60	50

■ Care Consultation
 ■ Chore Services
 ■ Homemaker Services
 ■ Caregiver Counseling



Board of Directors & Staff

Board of Directors

Chair
Ric Schaefer

Secretary
Mary Alice Carlson

Beth Hohenstein

Kirsten Cruikshank

Terese Tomanek

Kevin Pillsbury

Staff

Executive Director
Marianne Bovee

Volunteer Coordinator
Kim Hileman

Aging Services Specialist
Emma Shepard

Aging Services Specialist
Cyndy Klinsiek